



ADDRESS  
HARBOUR POINT



WHERE LIFE  
HAPPENS





# At the Crossroads

Address Harbour Point creates a visual gateway to Dubai Creek Harbour. Offering uninterrupted views of the iconic Dubai Creek Tower and the Downtown Dubai skyline, the serviced residences are truly stunning, outside and in.

# Limitless Activities with Uninterrupted Views

The luxury serviced residences offer seamless access to the marina, the park, and the pier, allowing residents to revel in countless dining, retail and entertainment experiences.







EMAAR



# Your Ultimate Address

Stamp Address Harbour Point as your official address. Select from 1, 2, and 3 bedroom waterfront apartments. It is truly here where life happens!





# DUBAI CREEK

HARBOUR



ADDRESS  
HARBOUR POINT

FLOOR PLANS





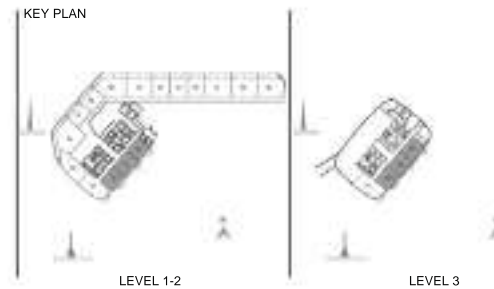
ADDRESS  
HARBOUR POINT

DUBAI CREEK  
HARBOUR



VILLAS APARTMENT  
1 BEDROOM APARTMENT - PD-1A

APART.	UNIT NO.	AREA					
		LIVE AREA		BALCONY AREA		TOTAL AREA	
		SQ. FT.	SQ. M.	SQ. FT.	SQ. M.	SQ. FT.	SQ. M.
<b>PODIUM</b>							
H.1	101	51.12	4.72	4.72	11.40	11.40	31.94
	102	50.72	4.67	4.67	11.30	11.30	31.34
	103	50.22	4.62	4.62	11.20	11.20	30.74
H.2	201	58.68	5.41	5.41	13.01	13.01	37.00
	202	58.18	5.36	5.36	12.91	12.91	36.40
	203	57.68	5.31	5.31	12.81	12.81	35.80
H.3	301	48.18	4.45	4.45	10.91	10.91	31.34
	302	47.68	4.40	4.40	10.81	10.81	30.74
	303	47.18	4.35	4.35	10.71	10.71	30.14



**FLOOR PLAN 1.** All dimensions are in imperial and metric, and measured from finish to finish excluding construction tolerances. 2. All materials, dimensions, and drawings are approximate only. 3. Information is subject to change without notice, at developer's absolute discretion. 4. Actual area may vary from the stated area. 5. Drawings not to scale. 6. All images used are for illustrative purposes only and do not represent the actual size, features, specifications, fittings, and furnishings. 7. The developer reserves the right to make revisions / alterations, at its absolute discretion, without any liability whatsoever.





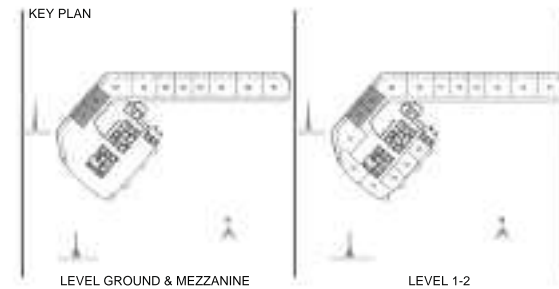
# ADDRESS HARBOUR POINT

# DUBAI CREEK HARBOUR



VILLAS APARTMENT  
1 BEDROOM APARTMENT - PD-1B

APART. NO.	UNIT NUMBER	AREA					
		LIVE AREA		BALCONY AREA		TOTAL AREA	
		SQ. FT.	SQ. M.	SQ. FT.	SQ. M.	SQ. FT.	SQ. M.
PODIUM							
GROUND	101	52.98	4.86	11.12	1.03	20.44	1.90
MEZZANINE	102	52.98	4.86	11.12	1.03	20.44	1.90
FL. 1	103	52.98	4.86	11.12	1.03	20.44	1.90
FL. 2	104	52.98	4.86	11.12	1.03	20.44	1.90



**FLOOR PLAN** 1. All dimensions are in imperial and metric, and measured from finish to finish excluding construction tolerances. 2. All materials, dimensions, and drawings are approximate only. 3. Information is subject to change without notice, at developer's absolute discretion. 4. Actual area may vary from the stated area. 5. Drawings not to scale. 6. All images used are for illustrative purposes only and do not represent the actual size, features, specifications, fittings, and furnishings. 7. The developer reserves the right to make revisions / alterations, at its absolute discretion, without any liability whatsoever.





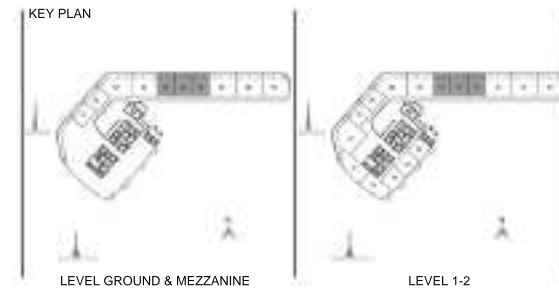
ADDRESS  
HARBOUR POINT

DUBAI CREEK  
HARBOUR



VILLAS APARTMENT  
1 BEDROOM APARTMENT - PD-1C

APART.	UNIT NUMBER	AREA					
		LIVING AREA		BALCONY AREA		TOTAL AREA	
		SQ. FT.	SQ. M.	SQ. FT.	SQ. M.	SQ. FT.	SQ. M.
<b>PODIUM</b>							
DUBAI	100	98.68	29.22	18.24	17.22	84.63	28.28
	100	98.68	29.22	18.24	17.22	84.63	28.28
	100	98.68	29.22	18.24	17.22	84.63	28.28
MEZZANINE	100	98.68	29.22	18.24	17.22	84.63	28.28
	100	98.68	29.22	18.24	17.22	84.63	28.28
	100	98.68	29.22	18.24	17.22	84.63	28.28
P1	111	98.68	29.22	18.24	17.22	84.63	28.28
	111	98.68	29.22	18.24	17.22	84.63	28.28
	111	98.68	29.22	18.24	17.22	84.63	28.28
P2	111	98.68	29.22	18.24	17.22	84.63	28.28
	111	98.68	29.22	18.24	17.22	84.63	28.28
	111	98.68	29.22	18.24	17.22	84.63	28.28



**FLOOR PLAN** 1. All dimensions are in imperial and metric, and measured from finish to finish excluding construction tolerances. 2. All materials, dimensions, and drawings are approximate only. 3. Information is subject to change without notice, at developer's absolute discretion. 4. Actual area may vary from the stated area. 5. Drawings not to scale. 6. All images used are for illustrative purposes only and do not represent the actual size, features, specifications, fittings, and furnishings. 7. The developer reserves the right to make revisions / alterations, at its absolute discretion, without any liability whatsoever.





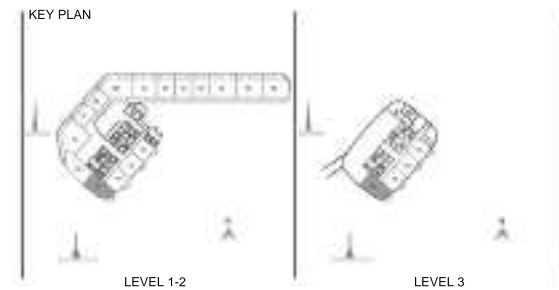
ADDRESS  
HARBOUR POINT

DUBAI CREEK  
HARBOUR



VILLAS APARTMENT  
2 BEDROOM APARTMENT - PD-2A.1

APART. NO.	UNIT NO.	AREA					
		LIVE AREA		BALCONY AREA		TOTAL AREA	
		SQ. FT.	SQ. M.	SQ. FT.	SQ. M.	SQ. FT.	SQ. M.
PODIUM							
101	101	2878	266.11	4.75	0.44	2882.75	266.55
102	102	2878	266.11	4.75	0.44	2882.75	266.55
103	103	2878	266.11	4.75	0.44	2882.75	266.55



**FLOOR PLAN** 1. All dimensions are in imperial and metric, and measured from finish to finish excluding construction tolerances. 2. All materials, dimensions, and drawings are approximate only. 3. Information is subject to change without notice, at developer's absolute discretion. 4. Actual area may vary from the stated area. 5. Drawings not to scale. 6. All images used are for illustrative purposes only and do not represent the actual size, features, specifications, fittings, and furnishings. 7. The developer reserves the right to make revisions / alterations, at its absolute discretion, without any liability whatsoever.





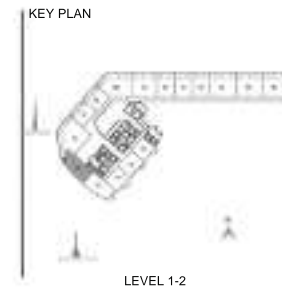
# ADDRESS HARBOUR POINT

# DUBAI CREEK HARBOUR



VILLAS APARTMENT  
2 BEDROOM APARTMENT - PD-2A.2

APART.	UNIT NUMBER	AREA					
		LIVING AREA	BEDROOM AREA	BATHROOM AREA	KITCHEN AREA	DINING AREA	TOTAL AREA
		404	527	124	527	420	2032
PODIUM							
H.L.	00	18.28	24.81	6.10	24.81	19.74	114.54
H.L.	00	18.13	24.70	6.04	24.70	19.59	114.16



**FLOOR PLAN** 1. All dimensions are in imperial and metric, and measured from finish to finish excluding construction tolerances. 2. All materials, dimensions, and drawings are approximate only. 3. Information is subject to change without notice, at developer's absolute discretion. 4. Actual area may vary from the stated area. 5. Drawings not to scale. 6. All images used are for illustrative purposes only and do not represent the actual size, features, specifications, fittings, and furnishings. 7. The developer reserves the right to make revisions / alterations, at its absolute discretion, without any liability whatsoever.





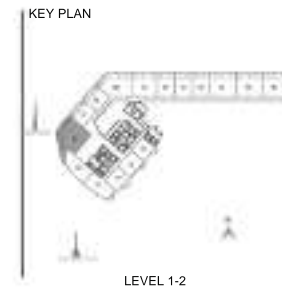
ADDRESS  
HARBOUR POINT

DUBAI CREEK  
HARBOUR



VILLAS APARTMENT  
2 BEDROOM APARTMENT - PD-2B

APART.	UNIT NUMBER	AREA					
		LIVING AREA	BEDROOM AREA	KITCHEN AREA	BATH AREA	HALL AREA	TERRACE AREA
		404	527	126	527	670	527
PODIUM							
PL	00	12.2	18.0	10.0	10.0	11.0	10.0
PL	00	12.2	18.0	10.0	10.0	11.0	10.0



**FLOOR PLAN** 1. All dimensions are in imperial and metric, and measured from finish to finish excluding construction tolerances. 2. All materials, dimensions, and drawings are approximate only. 3. Information is subject to change without notice, at developer's absolute discretion. 4. Actual area may vary from the stated area. 5. Drawings not to scale. 6. All images used are for illustrative purposes only and do not represent the actual size, features, specifications, fittings, and furnishings. 7. The developer reserves the right to make revisions / alterations, at its absolute discretion, without any liability whatsoever.





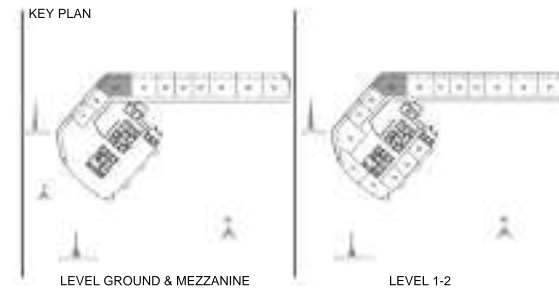
ADDRESS  
HARBOUR POINT

DUBAI CREEK  
HARBOUR



VILLAS APARTMENT  
2 BEDROOM APARTMENT - PD-2C

AREA	LINE NUMBER	AREA					
		LIVE AREA		BALCONY AREA		TOTAL AREA	
		SQ. FT.	SQ. M.	SQ. FT.	SQ. M.	SQ. FT.	SQ. M.
PODIUM							
COVERED	100	108.76	10.00	41.81	3.87	150.57	13.87
UNCOVERED	100	108.76	10.00	41.81	3.87	150.57	13.87
TOTAL	200	217.52	20.00	83.62	7.74	301.14	27.74



**FLOOR PLAN** 1. All dimensions are in imperial and metric, and measured from finish to finish excluding construction tolerances. 2. All materials, dimensions, and drawings are approximate only. 3. Information is subject to change without notice, at developer's absolute discretion. 4. Actual area may vary from the stated area. 5. Drawings not to scale. 6. All images used are for illustrative purposes only and do not represent the actual size, features, specifications, fittings, and furnishings. 7. The developer reserves the right to make revisions / alterations, at its absolute discretion, without any liability whatsoever.







ADDRESS  
HARBOUR POINT

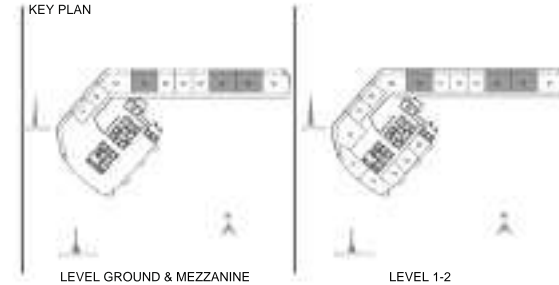
DUBAI CREEK  
HARBOUR



VILLAS APARTMENT  
2 BEDROOM APARTMENT - PD-2D

APART.	FLOOR NUMBER	AREA					
		LIVE AREA		BALCONY AREA		TOTAL AREA	
		SQ. FT.	SQ. M.	SQ. FT.	SQ. M.	SQ. FT.	SQ. M.
PODIUM							
GARDEN	108	281.6	111.17	34.20	13.07	118.26	134.40
	109	281.6	111.17	34.20	13.07	118.26	134.40
BEDROOM	107	281.6	111.17	34.20	13.07	118.26	134.40
	106	281.6	111.17	34.20	13.07	118.26	134.40
TV	113	281.6	111.17	34.20	13.07	118.26	134.40
	114	281.6	111.17	34.20	13.07	118.26	134.40
POD.	117	281.6	111.17	34.20	13.07	118.26	134.40
	118	281.6	111.17	34.20	13.07	118.26	134.40
	214	281.6	111.17	34.20	13.07	118.26	134.40
	215	281.6	111.17	34.20	13.07	118.26	134.40

KEY PLAN



**FLOOR PLAN** 1. All dimensions are in imperial and metric, and measured from finish to finish excluding construction tolerances. 2. All materials, dimensions, and drawings are approximate only. 3. Information is subject to change without notice, at developer's absolute discretion. 4. Actual area may vary from the stated area. 5. Drawings not to scale. 6. All images used are for illustrative purposes only and do not represent the actual size, features, specifications, fittings, and furnishings. 7. The developer reserves the right to make revisions / alterations, at its absolute discretion, without any liability whatsoever.



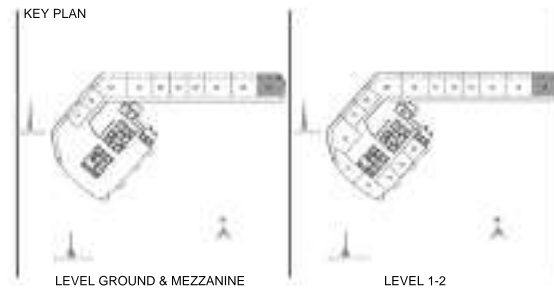


ADDRESS  
HARBOUR POINT

DUBAI CREEK  
HARBOUR

VILLAS APARTMENT  
2 BEDROOM APARTMENT - PD-2E

AREA	LINE NUMBER	AREA					
		LIVE AREA		BALCONY AREA		TOTAL AREA	
		SQ. FT.	SQ. M.	SQ. FT.	SQ. M.	SQ. FT.	SQ. M.
<b>PODIUM</b>							
APARTMENT	100	1634	151.87	2184	201.45	3818	353.32
MEZZANINE	101	1819	169.87	2184	201.45	4003	371.32
PL	11	1819	169.87	2184	201.45	4003	371.32
PL	12	1819	169.87	2184	201.45	4003	371.32



**FLOOR PLAN** 1. All dimensions are in imperial and metric, and measured from finish to finish excluding construction tolerances. 2. All materials, dimensions, and drawings are approximate only. 3. Information is subject to change without notice, at developer's absolute discretion. 4. Actual area may vary from the stated area. 5. Drawings not to scale. 6. All images used are for illustrative purposes only and do not represent the actual size, features, specifications, fittings, and furnishings. 7. The developer reserves the right to make revisions / alterations, at its absolute discretion, without any liability whatsoever.





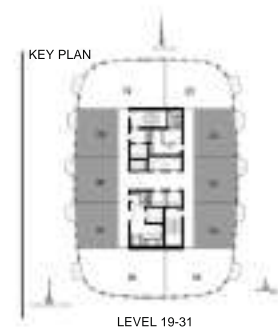
ADDRESS  
HARBOUR POINT

DUBAI CREEK  
HARBOUR



SERVICED APARTMENT  
1 BEDROOM APARTMENT - T1-1A

APART.	LINE NUMBER	AREA				
		LINE AREA	BALCONY AREA	TOTAL AREA	NET AREA	NET AREA
<b>TOWER 1</b>						
100	1000	33.12	3.30	36.42	33.12	36.42
	1001	33.12	3.30	36.42	33.12	36.42
	1002	33.12	3.30	36.42	33.12	36.42
	1003	33.12	3.30	36.42	33.12	36.42
	1004	33.12	3.30	36.42	33.12	36.42
200	2000	33.12	3.30	36.42	33.12	36.42
	2001	33.12	3.30	36.42	33.12	36.42
	2002	33.12	3.30	36.42	33.12	36.42
	2003	33.12	3.30	36.42	33.12	36.42
	2004	33.12	3.30	36.42	33.12	36.42
300	3000	33.12	3.30	36.42	33.12	36.42
	3001	33.12	3.30	36.42	33.12	36.42
	3002	33.12	3.30	36.42	33.12	36.42
	3003	33.12	3.30	36.42	33.12	36.42
	3004	33.12	3.30	36.42	33.12	36.42
400	4000	33.12	3.30	36.42	33.12	36.42
	4001	33.12	3.30	36.42	33.12	36.42
	4002	33.12	3.30	36.42	33.12	36.42
	4003	33.12	3.30	36.42	33.12	36.42
	4004	33.12	3.30	36.42	33.12	36.42



**FLOOR PLAN 1.** All dimensions are in imperial and metric, and measured from finish to finish excluding construction tolerances. 2. All materials, dimensions, and drawings are approximate only. 3. Information is subject to change without notice, at developer's absolute discretion. 4. Actual area may vary from the stated area. 5. Drawings not to scale. 6. All images used are for illustrative purposes only and do not represent the actual size, features, specifications, fittings, and furnishings. 7. The developer reserves the right to make revisions / alterations, at its absolute discretion, without any liability whatsoever.





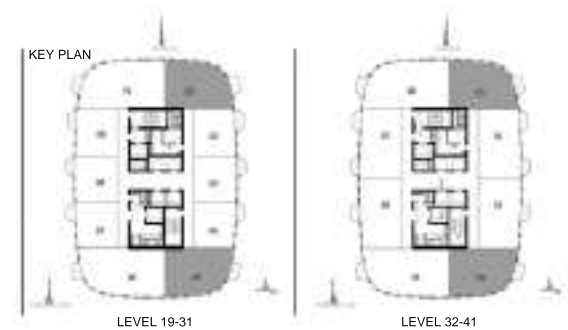
ADDRESS  
HARBOUR POINT

DUBAI CREEK  
HARBOUR



SERVICED APARTMENT  
2 BEDROOM APARTMENT - T1-2A

AREA	UNIT NUMBER	AREA					
		LIVE AREA		BALCONY AREA		TOTAL AREA	
		SQ. FT.	SQ. M.	SQ. FT.	SQ. M.	SQ. FT.	SQ. M.
<b>TOWER 1</b>							
UNIT	1901	94.21	8.64	1.18	1.08	100.99	9.31
	1902	94.21	8.64	1.18	1.08	100.99	9.31
	2001	94.21	8.64	1.18	1.08	100.99	9.31
	2002	94.21	8.64	1.18	1.08	100.99	9.31
TOTAL		376.84	34.56	4.72	4.32	486.44	45.15
AVERAGE		94.21	8.64	1.18	1.08	100.99	9.31



**FLOOR PLAN 1.** All dimensions are in imperial and metric, and measured from finish to finish excluding construction tolerances. 2. All materials, dimensions, and drawings are approximate only. 3. Information is subject to change without notice, at developer's absolute discretion. 4. Actual area may vary from the stated area. 5. Drawings not to scale. 6. All images used are for illustrative purposes only and do not represent the actual size, features, specifications, fittings, and furnishings. 7. The developer reserves the right to make revisions / alterations, at its absolute discretion, without any liability whatsoever.





ADDRESS  
HARBOUR POINT

DUBAI CREEK  
HARBOUR

SERVICED APARTMENT  
2 BEDROOM APARTMENT - T1-2B

APART.	LINE NUMBER	AREA					
		LIVING AREA	BEDROOM AREA	TOTAL AREA	NET AREA	GROSS AREA	NET AREA
TOWER 1							
120412	120412	1052	1052	2104	1052	1052	1052



**FLOOR PLAN 1.** All dimensions are in imperial and metric, and measured from finish to finish excluding construction tolerances. 2. All materials, dimensions, and drawings are approximate only. 3. Information is subject to change without notice, at developer's absolute discretion. 4. Actual area may vary from the stated area. 5. Drawings not to scale. 6. All images used are for illustrative purposes only and do not represent the actual size, features, specifications, fittings, and furnishings. 7. The developer reserves the right to make revisions / alterations, at its absolute discretion, without any liability whatsoever.



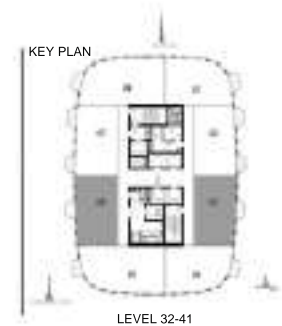


# ADDRESS HARBOUR POINT

# DUBAI CREEK HARBOUR

## SERVICED APARTMENT 2 BEDROOM APARTMENT - T1-2C

APN	LINE NUMBER	AREA					
		LINE AREA	BALCONY AREA	TOTAL AREA	NET	GRT	NET
<b>TOWER 1</b>							
101-414	101-414	96.0	20.00	116.0	4.4	120.4	120.4
	101-414	96.0	20.00	116.0	4.4	120.4	120.4



**FLOOR PLAN 1.** All dimensions are in imperial and metric, and measured from finish to finish excluding construction tolerances. 2. All materials, dimensions, and drawings are approximate only. 3. Information is subject to change without notice, at developer's absolute discretion. 4. Actual area may vary from the stated area. 5. Drawings not to scale. 6. All images used are for illustrative purposes only and do not represent the actual size, features, specifications, fittings, and furnishings. 7. The developer reserves the right to make revisions / alterations, at its absolute discretion, without any liability whatsoever.





ADDRESS  
HARBOUR POINT

DUBAI CREEK  
HARBOUR



SERVICED APARTMENT  
3 BEDROOM APARTMENT - T1-3A

AREA	UNIT NUMBER	AREA					
		LIVING AREA		BALCONY AREA		TOTAL AREA	
		SQ. FT.	SQ. M.	SQ. FT.	SQ. M.	SQ. FT.	SQ. M.
<b>TOWER 1</b>							
UNIT	1900	126.76	116.97	7.78	7.14	134.54	124.11
	1901	126.32	116.61	7.78	7.14	134.08	123.75
	2000	26.25	24.27	1.95	1.81	28.20	26.22
	2001	26.25	24.27	1.95	1.81	28.20	26.22
<b>TOTAL</b>	<b>1900-1901</b>	<b>253.08</b>	<b>233.58</b>	<b>15.73</b>	<b>14.28</b>	<b>162.72</b>	<b>147.86</b>
	<b>2000-2001</b>	<b>52.50</b>	<b>48.54</b>	<b>3.90</b>	<b>3.62</b>	<b>56.40</b>	<b>52.44</b>
	<b>TOTAL</b>	<b>305.58</b>	<b>282.12</b>	<b>19.63</b>	<b>17.90</b>	<b>219.12</b>	<b>200.30</b>



**FLOOR PLAN 1.** All dimensions are in imperial and metric, and measured from finish to finish excluding construction tolerances. 2. All materials, dimensions, and drawings are approximate only. 3. Information is subject to change without notice, at developer's absolute discretion. 4. Actual area may vary from the stated area. 5. Drawings not to scale. 6. All images used are for illustrative purposes only and do not represent the actual size, features, specifications, fittings, and furnishings. 7. The developer reserves the right to make revisions / alterations, at its absolute discretion, without any liability whatsoever.





# ADDRESS HARBOUR POINT

# DUBAI CREEK HARBOUR



### SERVICED APARTMENT 1 BEDROOM APARTMENT - T2-1A

AREA	UNIT NUMBER	AREA					
		LIVE AREA		BALCONY AREA		TOTAL AREA	
		SQ	SQ	SQ	SQ	SQ	SQ
<b>LIVEABLE</b>							
45-128	45-128	51.62	11.08	6.77	11.28	11.21	752.0
	45-129	50.61	11.11	6.71	11.01	11.28	750.0
	45-130	50.08	11.07	6.78	11.07	11.78	751.0
	45-131	52.08	11.11	6.78	11.07	11.78	751.0
	45-132	51.57	11.17	6.71	11.01	11.28	750.0
	45-133	48.88	11.01	6.71	11.01	11.78	751.0
107	107	57.42	11.06	7.08	11.01	11.61	750.0
	108	49.47	11.17	6.88	11.01	11.61	750.0
	109	58.38	11.07	6.88	11.01	11.78	750.0
	110	57.48	11.11	6.88	11.01	11.61	750.0
	111	49.47	11.17	6.88	11.01	11.61	750.0
	112	58.38	11.07	6.88	11.01	11.78	750.0
110	110	52.02	11.06	7.08	11.01	11.61	750.0
	111	52.02	11.06	7.08	11.01	11.61	750.0
	112	58.38	11.07	6.88	11.01	11.78	750.0
	113	57.48	11.11	6.88	11.01	11.61	750.0
	114	49.47	11.17	6.88	11.01	11.61	750.0
	115	58.38	11.07	6.88	11.01	11.78	750.0
109	109	57.48	11.11	6.88	11.01	11.61	750.0
	110	57.48	11.11	6.88	11.01	11.61	750.0
	111	57.48	11.11	6.88	11.01	11.61	750.0
108	108	57.48	11.11	6.88	11.01	11.61	750.0
	109	57.48	11.11	6.88	11.01	11.61	750.0
	110	57.48	11.11	6.88	11.01	11.61	750.0
107	107	57.42	11.06	7.08	11.01	11.61	750.0
	108	57.42	11.06	7.08	11.01	11.61	750.0
	109	57.42	11.06	7.08	11.01	11.61	750.0
106	106	57.42	11.06	7.08	11.01	11.61	750.0
	107	57.42	11.06	7.08	11.01	11.61	750.0
	108	57.42	11.06	7.08	11.01	11.61	750.0
105	105	57.42	11.06	7.08	11.01	11.61	750.0
	106	57.42	11.06	7.08	11.01	11.61	750.0
	107	57.42	11.06	7.08	11.01	11.61	750.0
104	104	57.42	11.06	7.08	11.01	11.61	750.0
	105	57.42	11.06	7.08	11.01	11.61	750.0
	106	57.42	11.06	7.08	11.01	11.61	750.0



**FLOOR PLAN 1.** All dimensions are in imperial and metric, and measured from finish to finish excluding construction tolerances. 2. All materials, dimensions, and drawings are approximate only. 3. Information is subject to change without notice, at developer's absolute discretion. 4. Actual area may vary from the stated area. 5. Drawings not to scale. 6. All images used are for illustrative purposes only and do not represent the actual size, features, specifications, fittings, and furnishings. 7. The developer reserves the right to make revisions / alterations, at its absolute discretion, without any liability whatsoever.







ADDRESS  
HARBOUR POINT

DUBAI CREEK  
HARBOUR

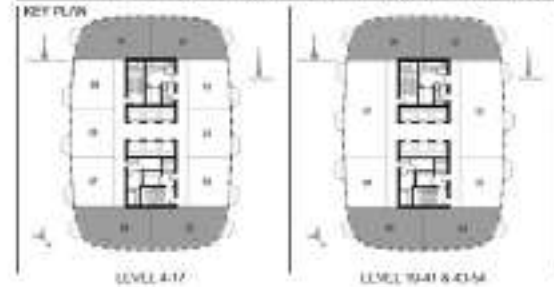


SERVICED APARTMENT  
2 BEDROOM APARTMENT - T2-2A

AREA	UNIT NUMBER	AREA					
		LIVING AREA		BALCONY AREA		TOTAL AREA	
		SQ. FT.	SQ. M.	SQ. FT.	SQ. M.	SQ. FT.	SQ. M.

LIVING

AREA	UNIT NUMBER	SQ. FT.	SQ. M.	SQ. FT.	SQ. M.	SQ. FT.	SQ. M.
LIVING	401-402	37.78	3.49	4.76	0.44	42.54	3.93
	403-404	37.78	3.49	4.76	0.44	42.54	3.93
	405-406	37.78	3.49	4.76	0.44	42.54	3.93
DINING	1001	37.78	3.49	4.76	0.44	42.54	3.93
	1002	37.78	3.49	4.76	0.44	42.54	3.93
	1003	37.78	3.49	4.76	0.44	42.54	3.93
KITCHEN	2001	37.78	3.49	4.76	0.44	42.54	3.93
	2002	37.78	3.49	4.76	0.44	42.54	3.93
	2003	37.78	3.49	4.76	0.44	42.54	3.93
BEDROOM	3001	37.78	3.49	4.76	0.44	42.54	3.93
	3002	37.78	3.49	4.76	0.44	42.54	3.93
	3003	37.78	3.49	4.76	0.44	42.54	3.93
BATHROOM	4001	37.78	3.49	4.76	0.44	42.54	3.93
	4002	37.78	3.49	4.76	0.44	42.54	3.93
	4003	37.78	3.49	4.76	0.44	42.54	3.93
STAIR	5001	37.78	3.49	4.76	0.44	42.54	3.93
	5002	37.78	3.49	4.76	0.44	42.54	3.93
	5003	37.78	3.49	4.76	0.44	42.54	3.93
CORRIDOR	6001	37.78	3.49	4.76	0.44	42.54	3.93
	6002	37.78	3.49	4.76	0.44	42.54	3.93
	6003	37.78	3.49	4.76	0.44	42.54	3.93
CL. (CLOSET)	7001	37.78	3.49	4.76	0.44	42.54	3.93
	7002	37.78	3.49	4.76	0.44	42.54	3.93
	7003	37.78	3.49	4.76	0.44	42.54	3.93
BALKON (BALCONY)	8001	37.78	3.49	4.76	0.44	42.54	3.93
	8002	37.78	3.49	4.76	0.44	42.54	3.93
	8003	37.78	3.49	4.76	0.44	42.54	3.93



**FLOOR PLAN 1.** All dimensions are in imperial and metric, and measured from finish to finish excluding construction tolerances. 2. All materials, dimensions, and drawings are approximate only. 3. Information is subject to change without notice, at developer's absolute discretion. 4. Actual area may vary from the stated area. 5. Drawings not to scale. 6. All images used are for illustrative purposes only and do not represent the actual size, features, specifications, fittings, and furnishings. 7. The developer reserves the right to make revisions / alterations, at its absolute discretion, without any liability whatsoever.





ADDRESS  
HARBOUR POINT

DUBAI CREEK  
HARBOUR



SERVICED APARTMENT  
3 BEDROOM APARTMENT - T2-3A

AREA	UNIT NUMBER	AREA					
		LIVING AREA		BEDROOM AREA		TOTAL AREA	
		SQ. FT.	SQ. M.	SQ. FT.	SQ. M.	SQ. FT.	SQ. M.
<b>FINISHED</b>							
1ST	1807	38.22	35.27	44.22	4.08	82.44	76.35
2ND	1807	38.22	35.27	44.22	4.08	82.44	76.35
3-4-5	1807-1809	38.22	35.27	44.22	4.08	82.44	76.35
6-7-8	1807-1809	38.22	35.27	44.22	4.08	82.44	76.35
9-10	1807	38.22	35.27	44.22	4.08	82.44	76.35
11-12	1807	38.22	35.27	44.22	4.08	82.44	76.35
13-14	1807	38.22	35.27	44.22	4.08	82.44	76.35
15-16	1807	38.22	35.27	44.22	4.08	82.44	76.35
17-18	1807	38.22	35.27	44.22	4.08	82.44	76.35
19-20	1807	38.22	35.27	44.22	4.08	82.44	76.35
21-22	1807	38.22	35.27	44.22	4.08	82.44	76.35
23-24	1807	38.22	35.27	44.22	4.08	82.44	76.35
25-26	1807	38.22	35.27	44.22	4.08	82.44	76.35
27-28	1807	38.22	35.27	44.22	4.08	82.44	76.35
29-30	1807	38.22	35.27	44.22	4.08	82.44	76.35
31-32	1807	38.22	35.27	44.22	4.08	82.44	76.35
33-34	1807	38.22	35.27	44.22	4.08	82.44	76.35
35-36	1807	38.22	35.27	44.22	4.08	82.44	76.35
37-38	1807	38.22	35.27	44.22	4.08	82.44	76.35
39-40	1807	38.22	35.27	44.22	4.08	82.44	76.35
41-42	1807	38.22	35.27	44.22	4.08	82.44	76.35
43-44	1807	38.22	35.27	44.22	4.08	82.44	76.35
45-46	1807	38.22	35.27	44.22	4.08	82.44	76.35
47-48	1807	38.22	35.27	44.22	4.08	82.44	76.35
49-50	1807	38.22	35.27	44.22	4.08	82.44	76.35
51-52	1807	38.22	35.27	44.22	4.08	82.44	76.35
53-54	1807	38.22	35.27	44.22	4.08	82.44	76.35
55-56	1807	38.22	35.27	44.22	4.08	82.44	76.35
57-58	1807	38.22	35.27	44.22	4.08	82.44	76.35
59-60	1807	38.22	35.27	44.22	4.08	82.44	76.35
61-62	1807	38.22	35.27	44.22	4.08	82.44	76.35
63-64	1807	38.22	35.27	44.22	4.08	82.44	76.35
65-66	1807	38.22	35.27	44.22	4.08	82.44	76.35
67-68	1807	38.22	35.27	44.22	4.08	82.44	76.35
69-70	1807	38.22	35.27	44.22	4.08	82.44	76.35
71-72	1807	38.22	35.27	44.22	4.08	82.44	76.35
73-74	1807	38.22	35.27	44.22	4.08	82.44	76.35
75-76	1807	38.22	35.27	44.22	4.08	82.44	76.35
77-78	1807	38.22	35.27	44.22	4.08	82.44	76.35
79-80	1807	38.22	35.27	44.22	4.08	82.44	76.35
81-82	1807	38.22	35.27	44.22	4.08	82.44	76.35
83-84	1807	38.22	35.27	44.22	4.08	82.44	76.35
85-86	1807	38.22	35.27	44.22	4.08	82.44	76.35
87-88	1807	38.22	35.27	44.22	4.08	82.44	76.35
89-90	1807	38.22	35.27	44.22	4.08	82.44	76.35
91-92	1807	38.22	35.27	44.22	4.08	82.44	76.35
93-94	1807	38.22	35.27	44.22	4.08	82.44	76.35
95-96	1807	38.22	35.27	44.22	4.08	82.44	76.35
97-98	1807	38.22	35.27	44.22	4.08	82.44	76.35
99-100	1807	38.22	35.27	44.22	4.08	82.44	76.35



**FLOOR PLAN 1.** All dimensions are in imperial and metric, and measured from finish to finish excluding construction tolerances. 2. All materials, dimensions, and drawings are approximate only. 3. Information is subject to change without notice, at developer's absolute discretion. 4. Actual area may vary from the stated area. 5. Drawings not to scale. 6. All images used are for illustrative purposes only and do not represent the actual size, features, specifications, fittings, and furnishings. 7. The developer reserves the right to make revisions / alterations, at its absolute discretion, without any liability whatsoever.





# ADDRESS HARBOUR POINT

For more information on  
**Address Harbour Point at Dubai Creek Harbour,**  
please call 800 36227(UAE) or  
+971 4 366 1688 (International).  
Visit our online sales centre at [emaar.com](http://emaar.com)  
or any of our sales centres across the UAE.

#### DUBAI:

Emaar Sales Centre, Downtown Dubai  
Dubai Creek Harbour Sales Pavilion, Ras Al Khor  
Dubai Hills Estate Sales Pavilion, Umm Suqeim Road

#### ABU DHABI:

Emaar Sales Centre, Al Nahda Tower,  
Ground Floor, 4th Street,  
Corniche, Al Muroor Road

Open from Saturday - Thursday, from 8:30am - 6pm

