

RESIDENCE 12 G+16

WATER HAS A NEW FRONT



MOHAMMED BIN RASHID
AL MAKTOUM CITY
DISTRICT ONE





District One Residences is a gated community, adorned with a glistening Crystal Lagoon and plush greenery. Right from spacious dwellings marked by aesthetic minimalism and smart functionality, our water-front apartments are bathed in natural light and imbue the charm of high-end, tranquil living.

THE ICONIC CRYSTAL LAGOON



THE ICONIC CRYSTAL LAGOON



THE ICONIC CRYSTAL LAGOON



ICONIC LOCATION



10 MINS
BUSINESS BAY



5 MINS
THE MEYDAN HOTEL



12 MINS
DIFC



15 MINS
BURJ AL ARAB



12 MINS
WORLD TRADE CENTRE



20 MINS
INTERNATIONAL AIRPORT



7 KM
Crystal Lagoon

8.4 KM Cycling & Running Track





60%
Green Cover



AMENITIES



Bicycle Track



Jogging Track



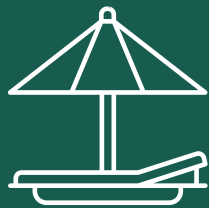
Supermarket



Pharmacy



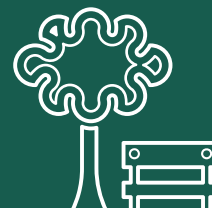
School



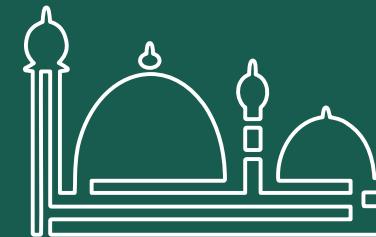
Crystal Lagoon
& Beachfront



Kids Play
Area



Parks



Mosque

DISTRICT ONE MASTERPLAN



TOWER LOCATION MAP



RESIDENCE 12
WATER HAS A NEW FRONT.

Disclaimer: The design layouts, dimensions, guidelines, visualizations, renderings, images and any other information as contained herein is provided for illustrative purposes only and subject to change at any time at the sole discretion of the Developer.

TOWER EXTERIOR



Disclaimer: The design layouts, dimensions, guidelines, visualizations, renderings, images and any other information as contained herein is provided for illustrative purposes only and subject to change at any time at the sole discretion of the Developer.

APARTMENT TOWER INTERIORS



APARTMENT TOWER INTERIORS



APARTMENT TOWER INTERIORS



G+16 Apartments - Residence 12

Typical Sixth to Sixteenth Floor

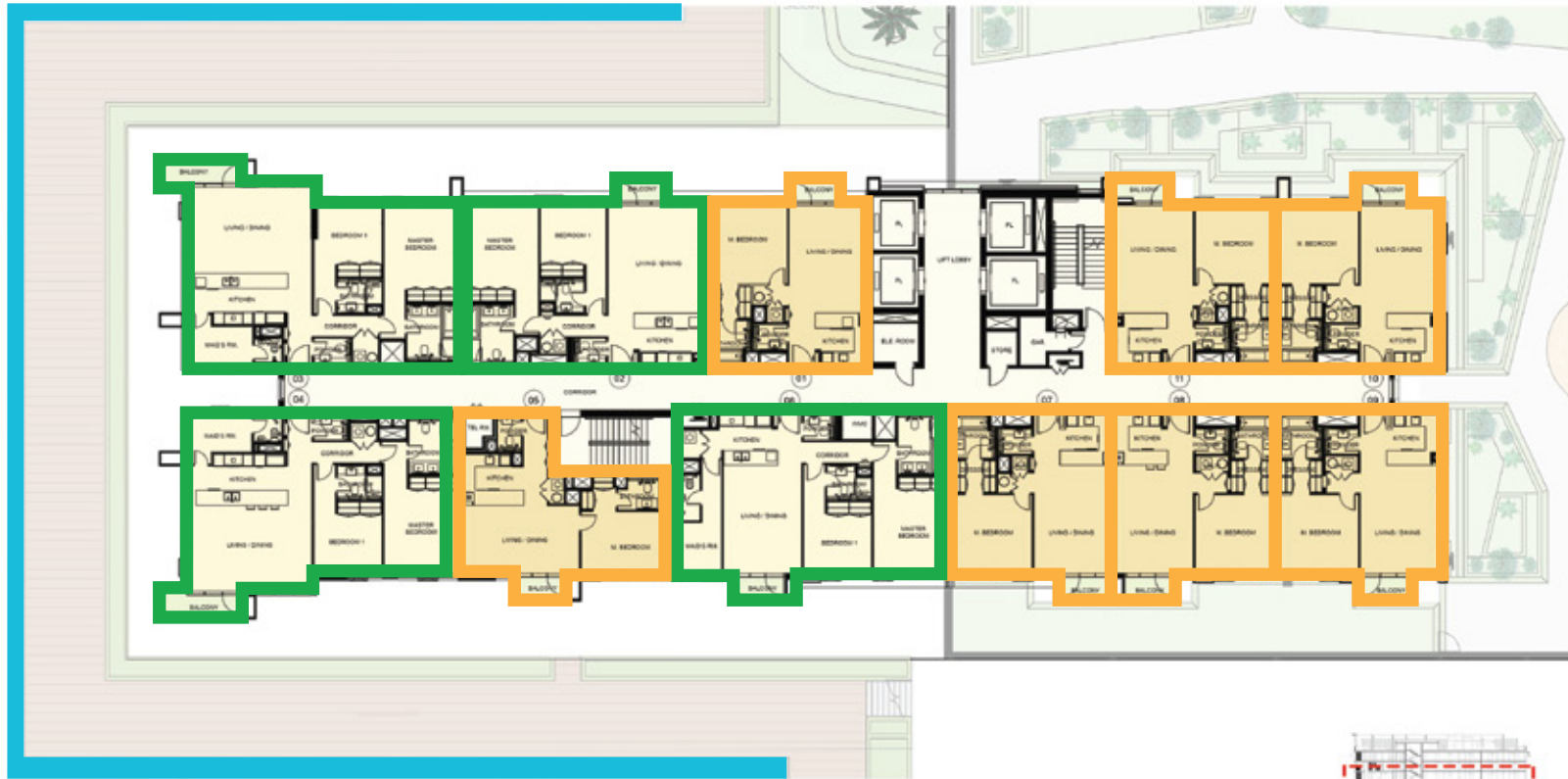
1 and 2 Bedroom Apartments

MEYDAN ONE

**MOHAMMED BIN RASHID
AL MAKTUUM CITY**
DISTRICT ONE

DUBAI SKYLINE

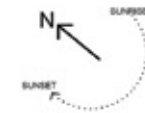
MEYDAN HOTEL



2 BEDROOM

1 BEDROOM

CRYSTAL LAGOON



DISCLAIMER: All measurements, dimensions, coordinates and drawings given as the Floor Plans in this literature are approximate and provided only for the purpose of marketing, illustration, information and general guidance as such drawings are not to scale. All the rooms, swimming pool, sizes, locations, orientations, dimensions, fixtures, fittings, finishes and specifications (including materials for, placement, size of rooms, windows, doors, balcony, furniture's, inbuilt wardrobe etc.) provided in the floor plans may vary as the same have been taken from concept designs prior to the actual development/construction and therefore their accuracy in relation to actual construction cannot be confirmed. Hence, we make no guarantee, warranty or representation as to the accuracy and completeness of the Floor plan information as changes may be made during the development process, without notice. Always refer to latest IFC design available in the sales office for the most accurate representation of all construction details

G+16 Apartments - Residence 12

Fifth Floor

1 and 2 Bedroom Apartments

**MOHAMMED BIN RASHID
AL MAKTUUM CITY**
DISTRICT ONE

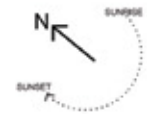
MEYDAN ONE

DUBAI SKYLINE

MEYDAN HOTEL



2 BEDROOM
 1 BEDROOM
 CRYSTAL LAGOON



DISCLAIMER: All measurements, dimensions, coordinates and drawings given as the Floor Plans in this literature are approximate and provided only for the purpose of marketing, illustration, information and general guidance as such drawings are not to scale. All the rooms, swimming pool, sizes, locations, orientations, dimensions, fixtures, fittings, finishes and specifications (including materials for, placement, size of rooms, windows, doors, balcony, furniture's, inbuilt wardrobe etc.) provided in the floor plans may vary as the same have been taken from concept designs prior to the actual development/construction and therefore their accuracy in relation to actual construction cannot be confirmed. Hence, we make no guarantee, warranty or representation as to the accuracy and completeness of the Floor plan information as changes may be made during the .development process, without notice. Always refer to latest IFC design available in the sales office for the most accurate representation of all construction details

G+16 Apartments - Residence 12

Fourth Floor

1 and 2 Bedroom Apartments

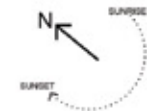
MEYDAN ONE

DUBAI SKYLINE

MEYDAN HOTEL



- 2 BEDROOM
- 1 BEDROOM
- CRYSTAL LAGOON



DISCLAIMER: All measurements, dimensions, coordinates and drawings given as the Floor Plans in this literature are approximate and provided only for the purpose of marketing, illustration, information and general guidance as such drawings are not to scale. All the rooms, swimming pool, sizes, locations, orientations, dimensions, fixtures, fittings, finishes and specifications (including materials for, placement, size of rooms, windows, doors, balcony, furniture's, inbuilt wardrobe etc.) provided in the floor plans may vary as the same have been taken from concept designs prior to the actual development/construction and therefore their accuracy in relation to actual construction cannot be confirmed. Hence, we make no guarantee, warranty or representation as to the accuracy and completeness of the Floor plan information as changes may be made during the .development process, without notice. Always refer to latest IFC design available in the sales office for the most accurate representation of all construction details

G+16 Apartments - Residence 12

Typical First to Third Floor

1 and 2 Bedroom Apartments

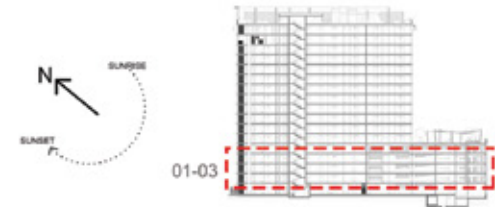
MEYDAN ONE

DUBAI SKYLINE

MEYDAN HOTEL



2 BEDROOM
 1 BEDROOM
 CRYSTAL LAGOON



DISCLAIMER: All measurements, dimensions, coordinates and drawings given as the Floor Plans in this literature are approximate and provided only for the purpose of marketing, illustration, information and general guidance as such drawings are not to scale. All the rooms, swimming pool, sizes, locations, orientations, dimensions, fixtures, fittings, finishes and specifications (including materials for, placement, size of rooms, windows, doors, balcony, furniture's, inbuilt wardrobe etc.) provided in the floor plans may vary as the same have been taken from concept designs prior to the actual development/construction and therefore their accuracy in relation to actual construction cannot be confirmed. Hence, we make no guarantee, warranty or representation as to the accuracy and completeness of the Floor plan information as changes may be made during the .development process, without notice. Always refer to latest IFC design available in the sales office for the most accurate representation of all construction details

2 BEDROOMS

1ST TO 16TH FLOOR

Suite Area: 1053 - 1244 sq. ft

Balcony Area: 30 - 52 sq. ft

Total Area: 1083 - 1296 sq. ft



**MOHAMMED BIN RASHID
AL MAKTOUM CITY**

DISTRICT ONE



DISCLAIMER: All measurements, dimensions, coordinates and drawings given as the Floor Plans in this literature are approximate and provided only for the purpose of marketing, illustration, information and general guidance as such drawings are not to scale. All the rooms, swimming pool, sizes, locations, orientations, dimensions, fixtures, fittings, finishes and specifications (including materials for, placement, size of rooms, windows, doors, balcony, furniture's, inbuilt wardrobe etc.) provided in the floor plans may vary as the same have been taken from concept designs prior to the actual development/construction and therefore their accuracy in relation to actual construction cannot be confirmed. Hence, we make no guarantee, warranty or representation as to the accuracy and completeness of the Floor plan information as changes may be made during the .development process, without notice. Always refer to latest IFC design available in the sales office for the most accurate representation of all construction details

2 BEDROOMS

1ST TO 16TH FLOOR

Suite Area: 1053 - 1244 sq. ft

Balcony Area: 30 - 52 sq. ft

Total Area: 1083 - 1296 sq. ft



MOHAMMED BIN RASHID
AL MAKTOUM CITY

DISTRICT ONE



DISCLAIMER: All measurements, dimensions, coordinates and drawings given as the Floor Plans in this literature are approximate and provided only for the purpose of marketing, illustration, information and general guidance as such drawings are not to scale. All the rooms, swimming pool, sizes, locations, orientations, dimensions, fixtures, fittings, finishes and specifications (including materials for, placement, size of rooms, windows, doors, balcony, furniture's, inbuilt wardrobe etc.) provided in the floor plans may vary as the same have been taken from concept designs prior to the actual development/construction and therefore their accuracy in relation to actual construction cannot be confirmed. Hence, we make no guarantee, warranty or representation as to the accuracy and completeness of the Floor plan information as changes may be made during the .development process, without notice. Always refer to latest IFC design available in the sales office for the most accurate representation of all construction details

2 BEDROOMS

1ST TO 16TH FLOOR

Suite Area: 1053 - 1244 sq. ft

Balcony Area: 30 - 52 sq. ft

Total Area: 1083 - 1296 sq. ft



**MOHAMMED BIN RASHID
AL MAKTOUM CITY**

DISTRICT ONE



DISCLAIMER: All measurements, dimensions, coordinates and drawings given as the Floor Plans in this literature are approximate and provided only for the purpose of marketing, illustration, information and general guidance as such drawings are not to scale. All the rooms, swimming pool, sizes, locations, orientations, dimensions, fixtures, fittings, finishes and specifications (including materials for, placement, size of rooms, windows, doors, balcony, furniture's, inbuilt wardrobe etc.) provided in the floor plans may vary as the same have been taken from concept designs prior to the actual development/construction and therefore their accuracy in relation to actual construction cannot be confirmed. Hence, we make no guarantee, warranty or representation as to the accuracy and completeness of the Floor plan information as changes may be made during the .development process, without notice. Always refer to latest IFC design available in the sales office for the most accurate representation of all construction details

1 BEDROOM

1ST TO 16TH FLOOR

Suite Area: 684 - 716 sq. ft

Balcony Area: 30 - 55 sq. ft

Total Area: 716 - 768 sq. ft



**MOHAMMED BIN RASHID
AL MAKTOUM CITY**

DISTRICT ONE



DISCLAIMER: All measurements, dimensions, coordinates and drawings given as the Floor Plans in this literature are approximate and provided only for the purpose of marketing, illustration, information and general guidance as such drawings are not to scale. All the rooms, swimming pool, sizes, locations, orientations, dimensions, fixtures, fittings, finishes and specifications (including materials for, placement, size of rooms, windows, doors, balcony, furniture's, inbuilt wardrobe etc.) provided in the floor plans may vary as the same have been taken from concept designs prior to the actual development/construction and therefore their accuracy in relation to actual construction cannot be confirmed. Hence, we make no guarantee, warranty or representation as to the accuracy and completeness of the Floor plan information as changes may be made during the development process, without notice. Always refer to latest IFC design available in the sales office for the most accurate representation of all construction details

1 BEDROOM

1ST TO 16TH FLOOR

Suite Area: 684 - 716 sq. ft

Balcony Area: 30 - 55 sq. ft

Total Area: 716 - 768 sq. ft



MOHAMMED BIN RASHID
AL MAKTOUM CITY

DISTRICT ONE



G+16
KEYPLAN

DISCLAIMER: All measurements, dimensions, coordinates and drawings given as the Floor Plans in this literature are approximate and provided only for the purpose of marketing, illustration, information and general guidance as such drawings are not to scale. All the rooms, swimming pool, sizes, locations, orientations, dimensions, fixtures, fittings, finishes and specifications (including materials for, placement, size of rooms, windows, doors, balcony, furniture's, inbuilt wardrobe etc.) provided in the floor plans may vary as the same have been taken from concept designs prior to the actual development/construction and therefore their accuracy in relation to actual construction cannot be confirmed. Hence, we make no guarantee, warranty or representation as to the accuracy and completeness of the Floor plan information as changes may be made during the .development process, without notice. Always refer to latest IFC design available in the sales office for the most accurate representation of all construction details

G+16 Apartments - Residence 12

Ground Floor

1 and 2 Bedroom Apartments

**MOHAMMED BIN RASHID
AL MAKTUUM CITY**
DISTRICT ONE

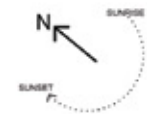
MEYDAN ONE

DUBAI SKYLINE

MEYDAN HOTEL



2 BEDROOM
 1 BEDROOM
 CRYSTAL LAGOON



DISCLAIMER: All measurements, dimensions, coordinates and drawings given as the Floor Plans in this literature are approximate and provided only for the purpose of marketing, illustration, information and general guidance as such drawings are not to scale. All the rooms, swimming pool, sizes, locations, orientations, dimensions, fixtures, fittings, finishes and specifications (including materials for, placement, size of rooms, windows, doors, balcony, furniture's, inbuilt wardrobe etc.) provided in the floor plans may vary as the same have been taken from concept designs prior to the actual development/construction and therefore their accuracy in relation to actual construction cannot be confirmed. Hence, we make no guarantee, warranty or representation as to the accuracy and completeness of the Floor plan information as changes may be made during the .development process, without notice. Always refer to latest IFC design available in the sales office for the most accurate representation of all construction details

2 BEDROOMS

GROUND FLOOR

Suite Area: 1053 - 1244 sq. ft

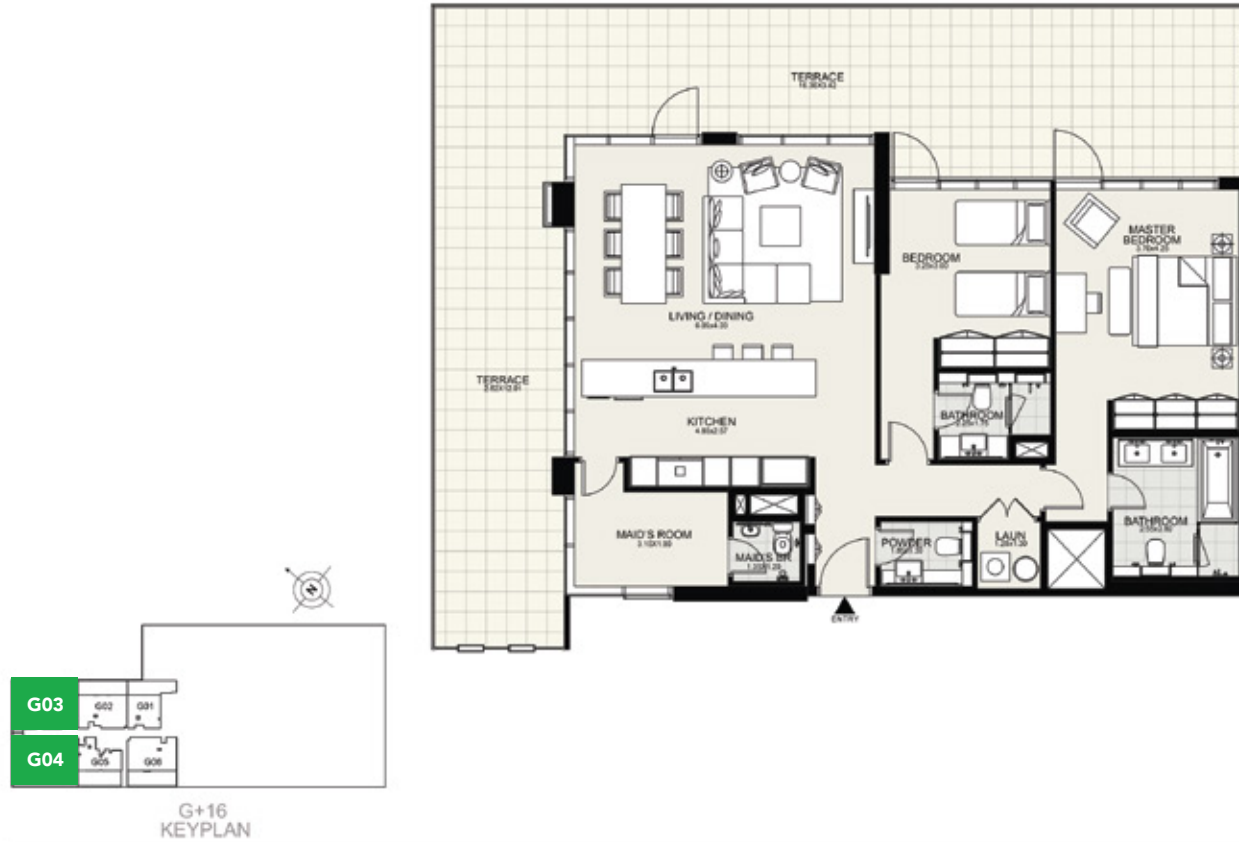
Balcony Area: 468 - 897 sq. ft

Total Area: 1521 - 2132 sq. ft



**MOHAMMED BIN RASHID
AL MAKTOUM CITY**

DISTRICT ONE



DISCLAIMER: All measurements, dimensions, coordinates and drawings given as the Floor Plans in this literature are approximate and provided only for the purpose of marketing, illustration, information and general guidance as such drawings are not to scale. All the rooms, swimming pool, sizes, locations, orientations, dimensions, fixtures, fittings, finishes and specifications (including materials for, placement, size of rooms, windows, doors, balcony, furniture's, inbuilt wardrobe etc.) provided in the floor plans may vary as the same have been taken from concept designs prior to the actual development/construction and therefore their accuracy in relation to actual construction cannot be confirmed. Hence, we make no guarantee, warranty or representation as to the accuracy and completeness of the Floor plan information as changes may be made during the development process, without notice. Always refer to latest IFC design available in the sales office for the most accurate representation of all construction details

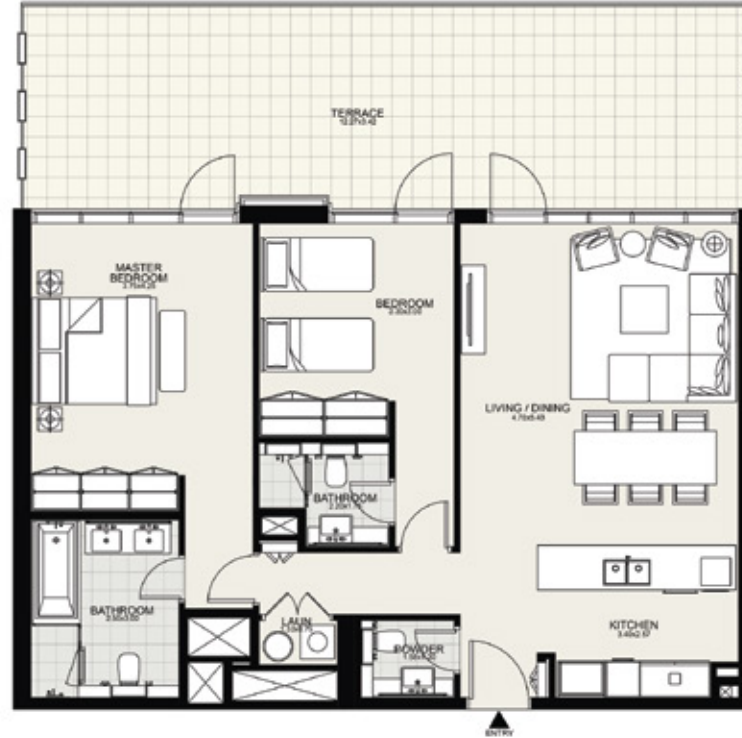
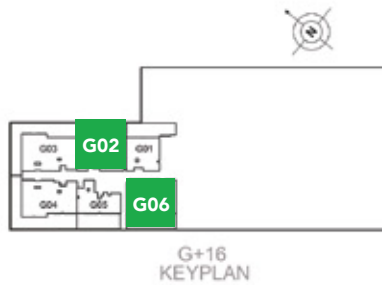
2 BEDROOMS

GROUND FLOOR

Suite Area: 1053 - 1244 sq. ft

Balcony Area: 468 - 897 sq. ft

Total Area: 1521 - 2132 sq. ft



DISCLAIMER: All measurements, dimensions, coordinates and drawings given as the Floor Plans in this literature are approximate and provided only for the purpose of marketing, illustration, information and general guidance as such drawings are not to scale. All the rooms, swimming pool, sizes, locations, orientations, dimensions, fixtures, fittings, finishes and specifications (including materials for, placement, size of rooms, windows, doors, balcony, furniture's, inbuilt wardrobe etc.) provided in the floor plans may vary as the same have been taken from concept designs prior to the actual development/construction and therefore their accuracy in relation to actual construction cannot be confirmed. Hence, we make no guarantee, warranty or representation as to the accuracy and completeness of the Floor plan information as changes may be made during the .development process, without notice. Always refer to latest IFC design available in the sales office for the most accurate representation of all construction details

1 BEDROOM

GROUND FLOOR

Suite Area: 686 - 714 sq. ft

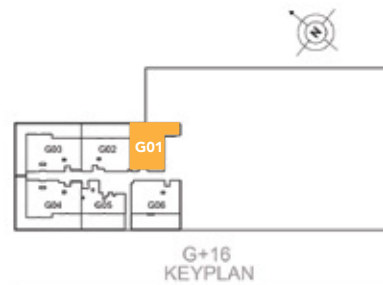
Balcony Area: 446 - 451 sq. ft

Total Area: 1137 - 1159 sq. ft



MOHAMMED BIN RASHID
AL MAKTOUM CITY

DISTRICT ONE



DISCLAIMER: All measurements, dimensions, coordinates and drawings given as the Floor Plans in this literature are approximate and provided only for the purpose of marketing, illustration, information and general guidance as such drawings are not to scale. All the rooms, swimming pool, sizes, locations, orientations, dimensions, fixtures, fittings, finishes and specifications (including materials for, placement, size of rooms, windows, doors, balcony, furniture's, inbuilt wardrobe etc.) provided in the floor plans may vary as the same have been taken from concept designs prior to the actual development/construction and therefore their accuracy in relation to actual construction cannot be confirmed. Hence, we make no guarantee, warranty or representation as to the accuracy and completeness of the Floor plan information as changes may be made during the .development process, without notice. Always refer to latest IFC design available in the sales office for the most accurate representation of all construction details

1 BEDROOM

GROUND FLOOR

Suite Area: 686 - 714 sq. ft

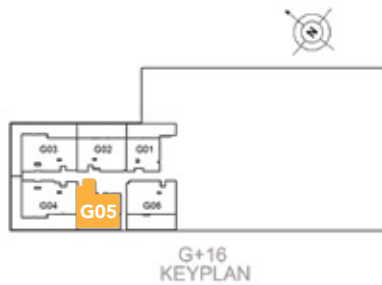
Balcony Area: 446 - 451 sq. ft

Total Area: 1137 - 1159 sq. ft



MOHAMMED BIN RASHID
AL MAKTOUM CITY

DISTRICT ONE



DISCLAIMER: All measurements, dimensions, coordinates and drawings given as the Floor Plans in this literature are approximate and provided only for the purpose of marketing, illustration, information and general guidance as such drawings are not to scale. All the rooms, swimming pool, sizes, locations, orientations, dimensions, fixtures, fittings, finishes and specifications (including materials for, placement, size of rooms, windows, doors, balcony, furniture's, inbuilt wardrobe etc.) provided in the floor plans may vary as the same have been taken from concept designs prior to the actual development/construction and therefore their accuracy in relation to actual construction cannot be confirmed. Hence, we make no guarantee, warranty or representation as to the accuracy and completeness of the Floor plan information as changes may be made during the .development process, without notice. Always refer to latest IFC design available in the sales office for the most accurate representation of all construction details

PAYMENT PLAN

BOOKING AMOUNT*

10%

**Upon
Booking***

1ST INSTALMENT*

5%

**20%
Construction**

2ND INSTALMENT*

5%

**30%
Construction**

3RD INSTALMENT*

10%

**40%
Construction**

4TH INSTALMENT*

10%

**50%
Construction**

5TH INSTALMENT*

10%

**60%
Construction**

FINAL INSTALMENT*

50%

**On
Completion**



**MOHAMMED BIN RASHID
AL MAKTOUM CITY**

DISTRICT ONE

Within UAE: 800 111 111
Outside UAE: 971 4 403 0000
Email: info@district1.com
www.district1.com