

VILLAS

MODERN ARABIC



MOHAMMED BIN RASHID
AL MAKTOUM CITY
DISTRICT ONE





Right from their three distinctive architectural designs to the wide spaces meant for everyday memories, our Villas are an exquisite masterpiece. Choose to live in a home that makes living a sweet adventure.

THE ICONIC CRYSTAL LAGOON



THE ICONIC CRYSTAL LAGOON



ICONIC LOCATION



10 MINS
BUSINESS BAY



5 MINS
THE MEYDAN HOTEL



12 MINS
DIFC



15 MINS
BURJ AL ARAB



12 MINS
WORLD TRADE CENTRE



20 MINS
INTERNATIONAL AIRPORT



7 KM
Crystal Lagoon

8.4 KM Cycling & Running Track





60%
Green Cover



AMENITIES



Bicycle Track



Jogging Track



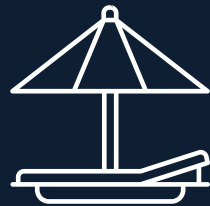
Supermarket



Pharmacy



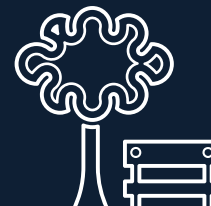
School



**Crystal Lagoon
& Beachfront**



**Kids Play
Area**



Parks



Mosque

DISTRICT ONE MASTERPLAN



PHASE I & II



VILLA EXTERIOR



Disclaimer: The design layouts, dimensions, guidelines, visualizations, renderings, images and any other information as contained herein is provided for illustrative purposes only and subject to change at any time at the sole discretion of the Developer.

VILLA INTERIORS



VILLA INTERIORS



MODERN ARABIC 6 BEDROOM TYPE A

GROUND FLOOR

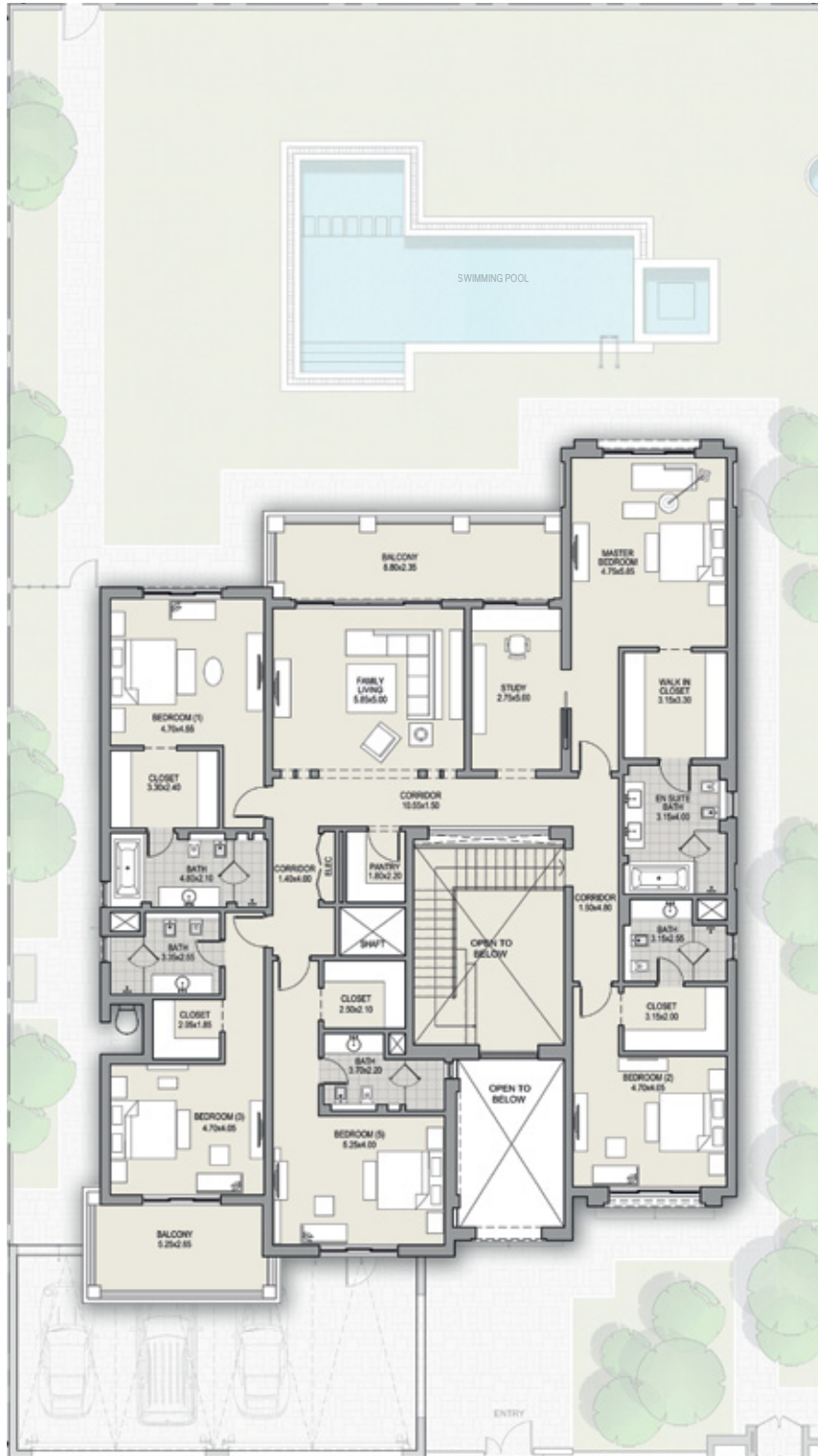


Disclaimer: The trademarks, images and copyright included in this literature may not be used without the express prior written consent of Meydan Sobha LLC FZ. All rights reserved. All reasonable care has been taken in the preparation of this literature and to the best of our knowledge, no relevant information has been omitted on purpose. However, Meydan Sobha LLC FZ and its management, employees, appointment sales and marketing agents disclaim all liability in the event that any information, design, area or matter in this literature differs from the sale and purchase agreement or the actual constructed development or part of the development. None of the information contained in this literature should be reviewed as an offer to sell or as a solicitation to purchase any part of the development. Rather the information contained herein is provided to you as that you can learn and generally familiarise yourself with the development. We reserve our right to make improvements and/or changes to this literature and the information, design or areas contained at any time without notice or obligation.

All measurements, dimensions, coordinates and drawings given in the floor plan brochures are approximate and provided only for the purpose of marketing, illustration, information and general guidance as such drawings are not to scale. All the rooms, swimming pool, sizes, locations, orientations, dimensions, fixtures, fittings, finishes and specifications (including materials, placement, size of rooms, windows, doors, balcony, furniture, inbuilt wardrobe etc.) provided in the floor plans may vary as the same have been taken from concept designs prior to the actual development/construction and therefore their accuracy in relation to actual construction cannot be confirmed. Hence, we make no guarantee, warranty or representation as to the accuracy and completeness of the floor plan information as changes may be made during the development process, without notice. Always refer to the latest IFC design available in the sales office for the most accurate representation of all construction details.

MODERN ARABIC 6 BEDROOM TYPE A

FIRST FLOOR



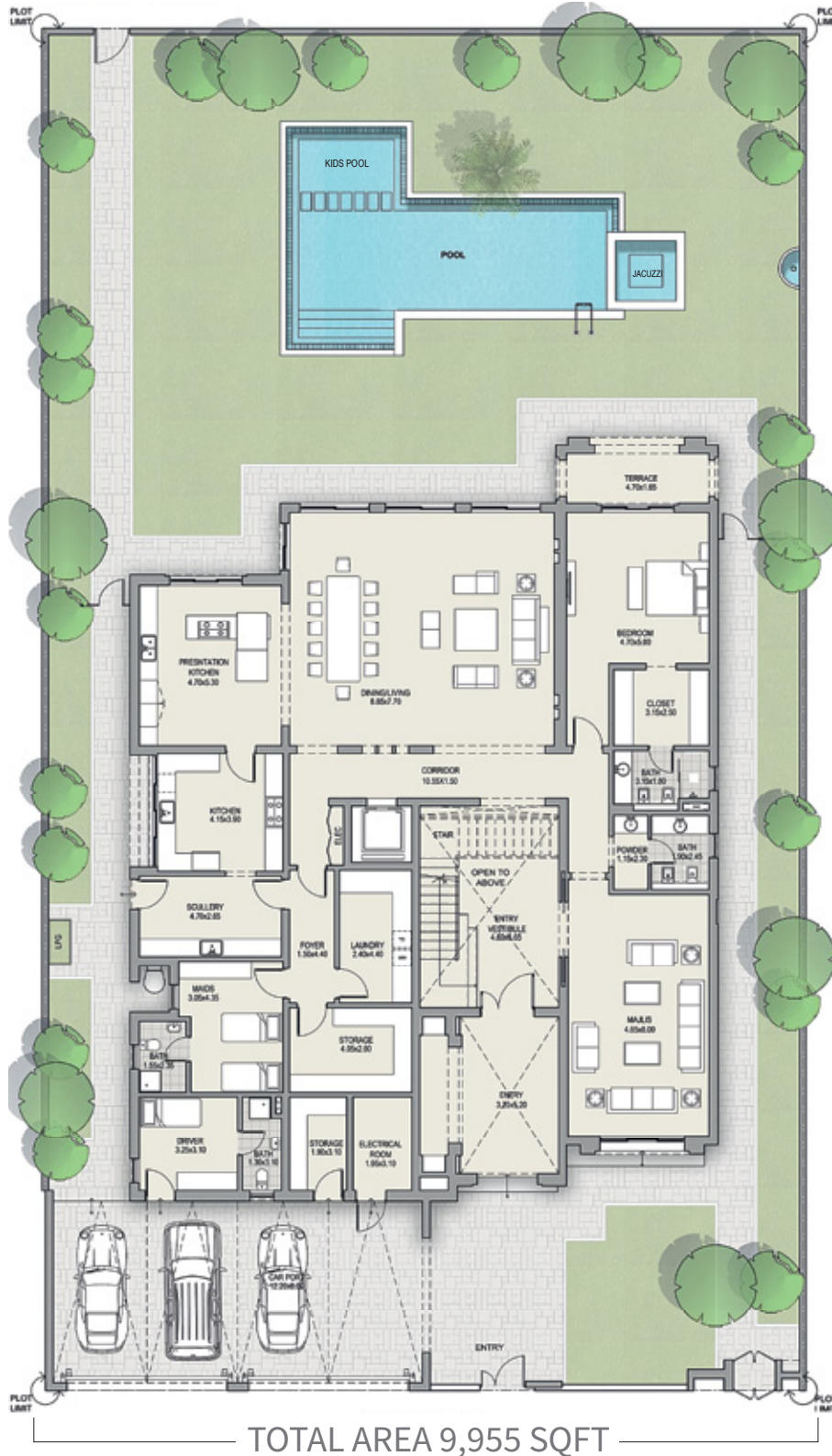
TOTAL AREA 9,939 SQFT

Disclaimer: The trademarks, images and copyright included in this literature may not be used without the express prior written consent of Meydan Sobha LLC FZ. All rights reserved. All reasonable care has been taken in the preparation of this literature and to the best of our knowledge, no relevant information has been omitted on purpose. However, Meydan Sobha LLC FZ and its management, employees, appointment sales and marketing agents disclaim all liability in the event that any information, design, area or matter in this literature differs from the sale and purchase agreement or the actual constructed development or part of the development. None of the information contained in this literature should be reviewed as an offer to sell or as a solicitation to purchase any part of the development. Rather the information contained herein is provided to you as that you can learn and generally familiarise yourself with the development. We reserve our right to make improvements and/or changes to this literature and the information, design or areas contained at any time without notice or obligation.

All measurements, dimensions, coordinates and drawings given in the floor plan brochures are approximate and provided only for the purpose of marketing, illustration, information and general guidance as such drawings are not to scale. All the rooms, swimming pool, sizes, locations, orientations, dimensions, fixtures, fittings, finishes and specifications (including materials, placement, size of rooms, windows, doors, balcony, furniture, inbuilt wardrobe etc.) provided in the floor plans may vary as the same have been taken from concept designs prior to the actual development/construction and therefore their accuracy in relation to actual construction cannot be confirmed. Hence, we make no guarantee, warranty or representation as to the accuracy and completeness of the floor plan information as changes may be made during the development process, without notice. Always refer to the latest IFC design available in the sales office for the most accurate representation of all construction details.

MODERN ARABIC 6 BEDROOM TYPE C

GROUND FLOOR

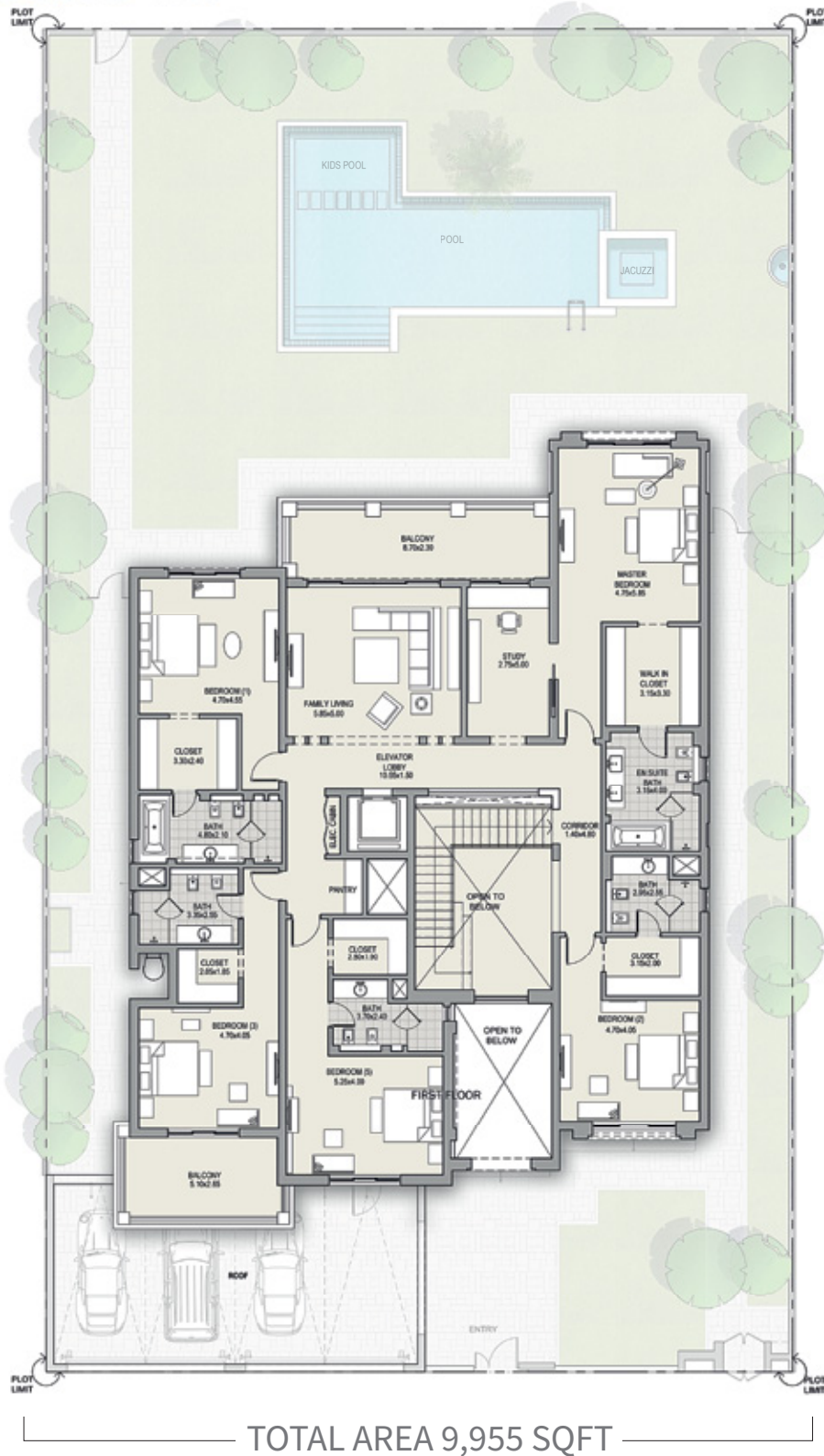


Disclaimer: The trademarks, images and copyright included in this literature may not be used without the express prior written consent of Meydan Sobha LLC FZ. All rights reserved. All reasonable care has been taken in the preparation of this literature and to the best of our knowledge, no relevant information has been omitted on purpose. However, Meydan Sobha LLC FZ and its management, employees, appointment sales and marketing agents disclaim all liability in the event that any information, design, area or matter in this literature differs from the sale and purchase agreement or the actual constructed development or part of the development. None of the information contained in this literature should be reviewed as an offer to sell or as a solicitation to purchase any part of the development. Rather the information contained herein is provided to you as that you can learn and generally familiarise yourself with the development. We reserve our right to make improvements and/or changes to this literature and the information, design or areas contained at any time without notice or obligation.

All measurements, dimensions, coordinates and drawings given in the floor plan brochures are approximate and provided only for the purpose of marketing, illustration, information and general guidance as such drawings are not to scale. All the rooms, swimming pool, sizes, locations, orientations, dimensions, fixtures, fittings, finishes and specifications (including materials, placement, size of rooms, windows, doors, balcony, furniture, inbuilt wardrobe etc.) provided in the floor plans may vary as the same have been taken from concept designs prior to the actual development/construction and therefore their accuracy in relation to actual construction cannot be confirmed. Hence, we make no guarantee, warranty or representation as to the accuracy and completeness of the floor plan information as changes may be made during the development process, without notice. Always refer to the latest IFC design available in the sales office for the most accurate representation of all construction details.

MODERN ARABIC 6 BEDROOM TYPE C

FIRST FLOOR



Disclaimer: The trademarks, images and copyright included in this literature may not be used without the express prior written consent of Meydan Sobha LLC FZ. All rights reserved. All reasonable care has been taken in the preparation of this literature and to the best of our knowledge, no relevant information has been omitted on purpose. However, Meydan Sobha LLC FZ and its management, employees, appointment sales and marketing agents disclaim all liability in the event that any information, design, area or matter in this literature differs from the sale and purchase agreement or the actual constructed development or part of the development. None of the information contained in this literature should be reviewed as an offer to sell or as a solicitation to purchase any part of the development. Rather the information contained herein is provided to you as that you can learn and generally familiarise yourself with the development. We reserve our right to make improvements and/or changes to this literature and the information, design or areas contained at any time without notice or obligation.

All measurements, dimensions, coordinates and drawings given in the floor plan brochures are approximate and provided only for the purpose of marketing, illustration, information and general guidance as such drawings are not to scale. All the rooms, swimming pool, sizes, locations, orientations, dimensions, fixtures, fittings, finishes and specifications (including materials, placement, size of rooms, windows, doors, balcony, furniture, inbuilt wardrobe etc.) provided in the floor plans may vary as the same have been taken from concept designs prior to the actual development/construction and therefore their accuracy in relation to actual construction cannot be confirmed. Hence, we make no guarantee, warranty or representation as to the accuracy and completeness of the floor plan information as changes may be made during the development process, without notice. Always refer to the latest IFC design available in the sales office for the most accurate representation of all construction details.

MODERN ARABIC 6+ BEDROOM TYPE C

BASEMENT



Disclaimer: The trademarks, images and copyright included in this literature may not be used without the express prior written consent of Meydan Sobha LLC FZ. All rights reserved. All reasonable care has been taken in the preparation of this literature and to the best of our knowledge, no relevant information has been omitted on purpose. However, Meydan Sobha LLC FZ and its management, employees, appointment sales and marketing agents disclaim all liability in the event that any information, design, area or matter in this literature differs from the sale and purchase agreement or the actual constructed development or part of the development. None of the information contained in this literature should be reviewed as an offer to sell or as a solicitation to purchase any part of the development. Rather the information contained herein is provided to you as that you can learn and generally familiarise yourself with the development. We reserve our right to make improvements and/or changes to this literature and the information, design or areas contained at any time without notice or obligation.

All measurements, dimensions, coordinates and drawings given in the floor plan brochures are approximate and provided only for the purpose of marketing, illustration, information and general guidance as such drawings are not to scale. All the rooms, swimming pool, sizes, locations, orientations, dimensions, fixtures, fittings, finishes and specifications (including materials, placement, size of rooms, windows, doors, balcony, furniture, inbuilt wardrobe etc.) provided in the floor plans may vary as the same have been taken from concept designs prior to the actual development/construction and therefore their accuracy in relation to actual construction cannot be confirmed. Hence, we make no guarantee, warranty or representation as to the accuracy and completeness of the floor plan information as changes may be made during the development process, without notice. Always refer to the latest IFC design available in the sales office for the most accurate representation of all construction details.

MODERN ARABIC 6+ BEDROOM TYPE C

GROUND FLOOR



Disclaimer: The trademarks, images and copyright included in this literature may not be used without the express prior written consent of Meydan Sobha LLC FZ. All rights reserved. All reasonable care has been taken in the preparation of this literature and to the best of our knowledge, no relevant information has been omitted on purpose. However, Meydan Sobha LLC FZ and its management, employees, appointment sales and marketing agents disclaim all liability in the event that any information, design, area or matter in this literature differs from the sale and purchase agreement or the actual constructed development or part of the development. None of the information contained in this literature should be reviewed as an offer to sell or as a solicitation to purchase any part of the development. Rather the information contained herein is provided to you as that you can learn and generally familiarise yourself with the development. We reserve our right to make improvements and/or changes to this literature and the information, design or areas contained at any time without notice or obligation.

All measurements, dimensions, coordinates and drawings given in the floor plan brochures are approximate and provided only for the purpose of marketing, illustration, information and general guidance as such drawings are not to scale. All the rooms, swimming pool, sizes, locations, orientations, dimensions, fixtures, fittings, finishes and specifications (including materials, placement, size of rooms, windows, doors, balcony, furniture, inbuilt wardrobe etc) provided in the floor plans may vary as the same have been taken from concept designs prior to the actual development/construction and therefore their accuracy in relation to actual construction cannot be confirmed. Hence, we make no guarantee, warranty or representation as to the accuracy and completeness of the floor plan information as changes may be made during the development process, without notice. Always refer to the latest IFC design available in the sales office for the most accurate representation of all construction details.

MODERN ARABIC 6+ BEDROOM TYPE C

FIRST FLOOR



TOTAL AREA 11,302 SQFT

Disclaimer: The trademarks, images and copyright included in this literature may not be used without the express prior written consent of Meydan Sobha LLC FZ. All rights reserved. All reasonable care has been taken in the preparation of this literature and to the best of our knowledge, no relevant information has been omitted on purpose. However, Meydan Sobha LLC FZ and its management, employees, appointment sales and marketing agents disclaim all liability in the event that any information, design, area or matter in this literature differs from the sale and purchase agreement or the actual constructed development or part of the development. None of the information contained in this literature should be reviewed as an offer to sell or as a solicitation to purchase any part of the development. Rather the information contained herein is provided to you as that you can learn and generally familiarise yourself with the development. We reserve our right to make improvements and/or changes to this literature and the information, design or areas contained at any time without notice or obligation.

All measurements, dimensions, coordinates and drawings given in the floor plan brochures are approximate and provided only for the purpose of marketing, illustration, information and general guidance as such drawings are not to scale. All the rooms, swimming pool, sizes, locations, orientations, dimensions, fixtures, fittings, finishes and specifications (including materials, placement, size of rooms, windows, doors, balcony, furniture, inbuilt wardrobe etc) provided in the floor plans may vary as the same have been taken from concept designs prior to the actual development/construction and therefore their accuracy in relation to actual construction cannot be confirmed. Hence, we make no guarantee, warranty or representation as to the accuracy and completeness of the floor plan information as changes may be made during the development process, without notice. Always refer to the latest IFC design available in the sales office for the most accurate representation of all construction details.

MODERN ARABIC 5 BEDROOM TYPE A

GROUND FLOOR



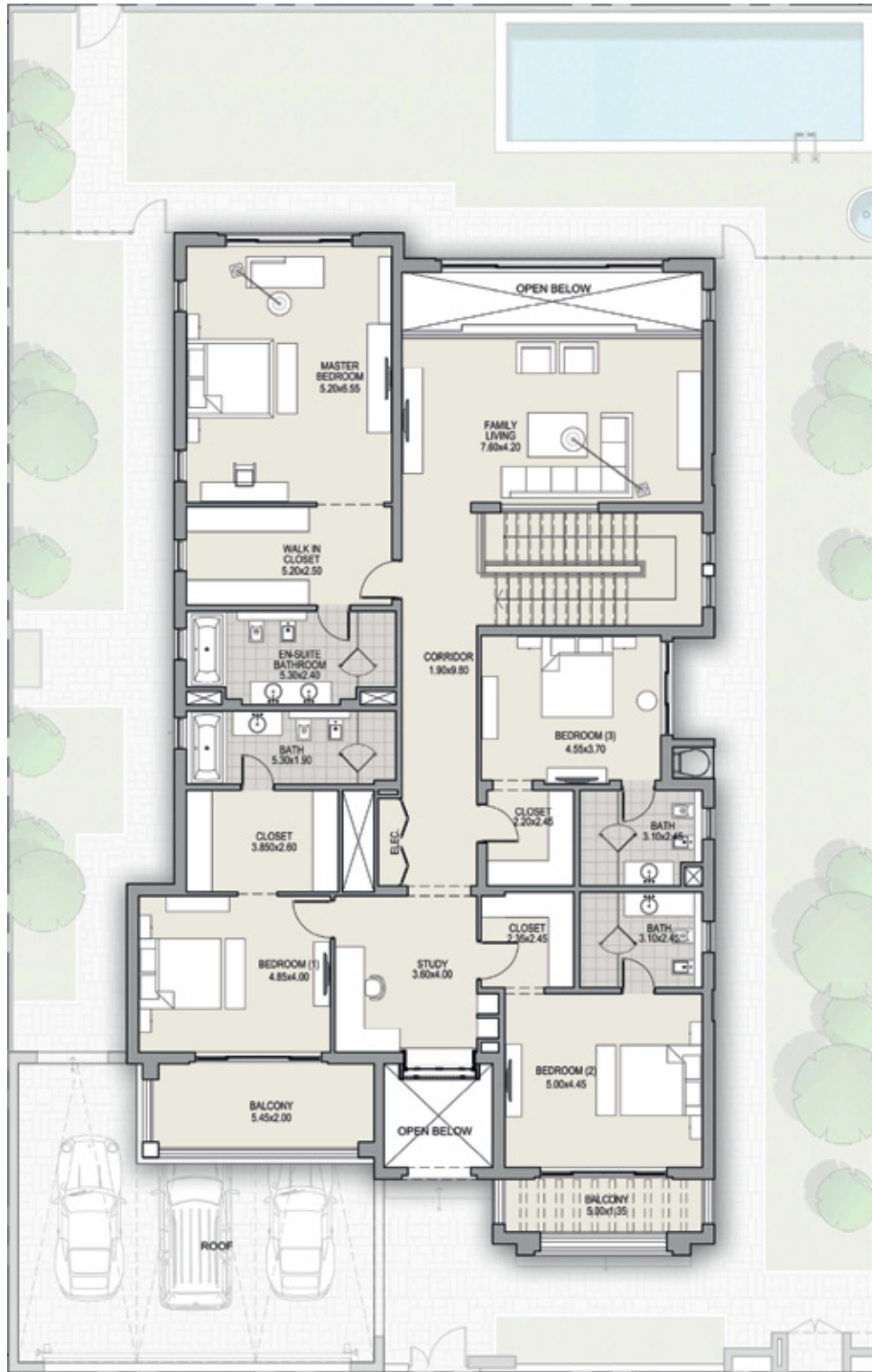
TOTAL AREA 7,690 SQFT

Disclaimer: The trademarks, images and copyright included in this literature may not be used without the express prior written consent of Meydan Sobha LLC FZ. All rights reserved. All reasonable care has been taken in the preparation of this literature and to the best of our knowledge, no relevant information has been omitted on purpose. However, Meydan Sobha LLC FZ and its management, employees, appointment sales and marketing agents disclaim all liability in the event that any information, design, area or matter in this literature differs from the sale and purchase agreement or the actual constructed development or part of the development. None of the information contained in this literature should be reviewed as an offer to sell or as a solicitation to purchase any part of the development. Rather the information contained herein is provided to you as that you can learn and generally familiarise yourself with the development. We reserve our right to make improvements and/or changes to this literature and the information, design or areas contained at any time without notice or obligation.

All measurements, dimensions, coordinates and drawings given in the floor plan brochures are approximate and provided only for the purpose of marketing, illustration, information and general guidance as such drawings are not to scale. All the rooms, swimming pool, sizes, locations, orientations, dimensions, fixtures, fittings and specifications (including materials, placement, size of rooms, windows, doors, balcony, furniture, inbuilt wardrobe etc) provided in the floor plans may vary as the same have been taken from concept designs prior to the actual development/construction and therefore their accuracy in relation to actual construction cannot be confirmed. Hence, we make no guarantee, warranty or representation as to the accuracy and completeness of the floor plan information as changes may be made during the development process, without notice. Always refer to the latest IFC design available in the sales office for the most accurate representation of all construction details.

MODERN ARABIC 5 BEDROOM TYPE A

FIRST FLOOR



TOTAL AREA 7,690 SQFT

Disclaimer: The trademarks, images and copyright included in this literature may not be used without the express prior written consent of Meydan Sobha LLC FZ. All rights reserved. All reasonable care has been taken in the preparation of this literature and to the best of our knowledge, no relevant information has been omitted on purpose. However, Meydan Sobha LLC FZ and its management, employees, appointment sales and marketing agents disclaim all liability in the event that any information, design, area or matter in this literature differs from the sale and purchase agreement or the actual constructed development or part of the development. None of the information contained in this literature should be reviewed as an offer to sell or as a solicitation to purchase any part of the development. Rather the information contained herein is provided to you as that you can learn and generally familiarise yourself with the development. We reserve our right to make improvements and/or changes to this literature and the information, design or areas contained at any time without notice or obligation.

All measurements, dimensions, coordinates and drawings given in the floor plan brochures are approximate and provided only for the purpose of marketing, illustration, information and general guidance as such drawings are not to scale. All the rooms, swimming pool, sizes, locations, orientations, dimensions, fixtures, fittings, finishes and specifications (including materials, placement, size of rooms, windows, doors, balcony, furniture, inbuilt wardrobe etc) provided in the floor plans may vary as the same have been taken from concept designs prior to the actual development/construction and therefore their accuracy in relation to actual construction cannot be confirmed. Hence, we make no guarantee, warranty or representation as to the accuracy and completeness of the floor plan information as changes may be made during the development process, without notice. Always refer to the latest IFC design available in the sales office for the most accurate representation of all construction details.



PAYMENT SCHEDULE

READY TO MOVE IN

INSTALLMENT	% OF AMOUNT DUE
On Booking	30%
Balance to be paid in 10 Quarters (7% each) from the Booking Date	70%



MOHAMMED BIN RASHID
AL MAKTOUM CITY

DISTRICT ONE

DISTRICT1.COM



PAYMENT SCHEDULE

CORE & SHELL UNIT SOLD AS "AS BUILT"

INSTALLMENT	% OF AMOUNT DUE
On Booking	30%
On SPA Finalization	70%



MOHAMMED BIN RASHID
AL MAKTOUM CITY

DISTRICT ONE

DISTRICT1.COM



PAYMENT SCHEDULE

CORE & SHELL TO BE COMPLETED

INSTALLMENT	% OF AMOUNT DUE
On Booking	30%
During Construction (in 3 quarters, 10% each quarter)	30%
Post Handover (in 4 quarters, 10% each quarter)	40%



MOHAMMED BIN RASHID
AL MAKTOUM CITY

DISTRICT ONE

DISTRICT1.COM



**MOHAMMED BIN RASHID
AL MAKTOUM CITY**

DISTRICT ONE

Within UAE: 800 111 111

Outside UAE: 971 4 403 0000

Email: info@district1.com

www.district1.com